

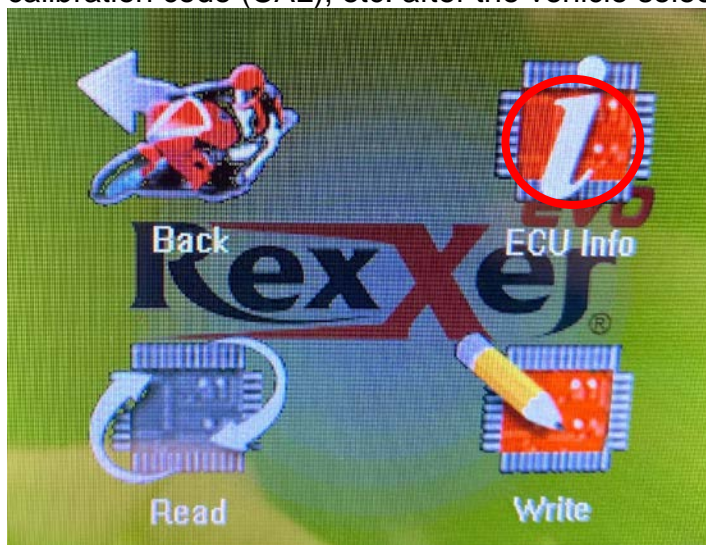
## Where can I find the calibration code (CAL)?

### 1. ECU INFO

- a. Connect the supplied serial interface cable to the RexXer EVO Professional. **Please do not connect the USB cable additionally to the RexXer EVO Professional!**
- b. Connect the other end of the serial interface cable to the diagnostic/inspection (OBD) connector on your motorbike. In addition, connect the positive pole of the battery to the alligator clip marked red (not present/necessary on all interface cables) and the negative pole of the battery to the black alligator clip. **Caution: If the polarity is reversed, the unit will be destroyed by overvoltage!!!**
- c. The display of the RexXer EVO Professional will switch on automatically and you can select the Tuning option in the main menu.

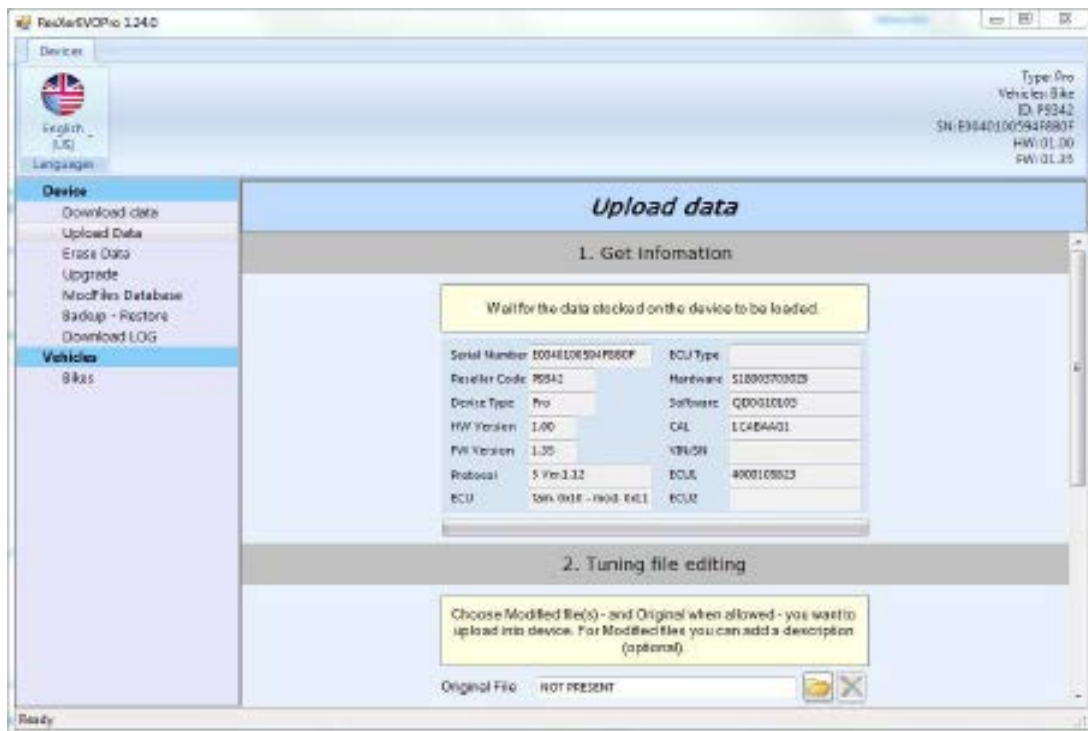


- d. Here you can display the ECU information such as ECU type, calibration code (CAL), etc. after the vehicle selection.



## 2. LOG File

If you cannot find the CAL via the ECU Info function, then you have the option of generating and saving a LOG file via the Download LOG menu item. This is the LOG book of the RexXer EVO Professional, which records all steps taken with the device. If the reading process has already been completed, we can obtain the calibration code (CAL) from this file.



Please send us the file to [info@rexxer.eu](mailto:info@rexxer.eu) if required.  
Do not forget to specify which tuning mapping you need!

**Note: The LOG file must be generated again after each operation!**

## 3. ECU Label

For some ECU types you will find the calibration code (CAL) on the ECU label.